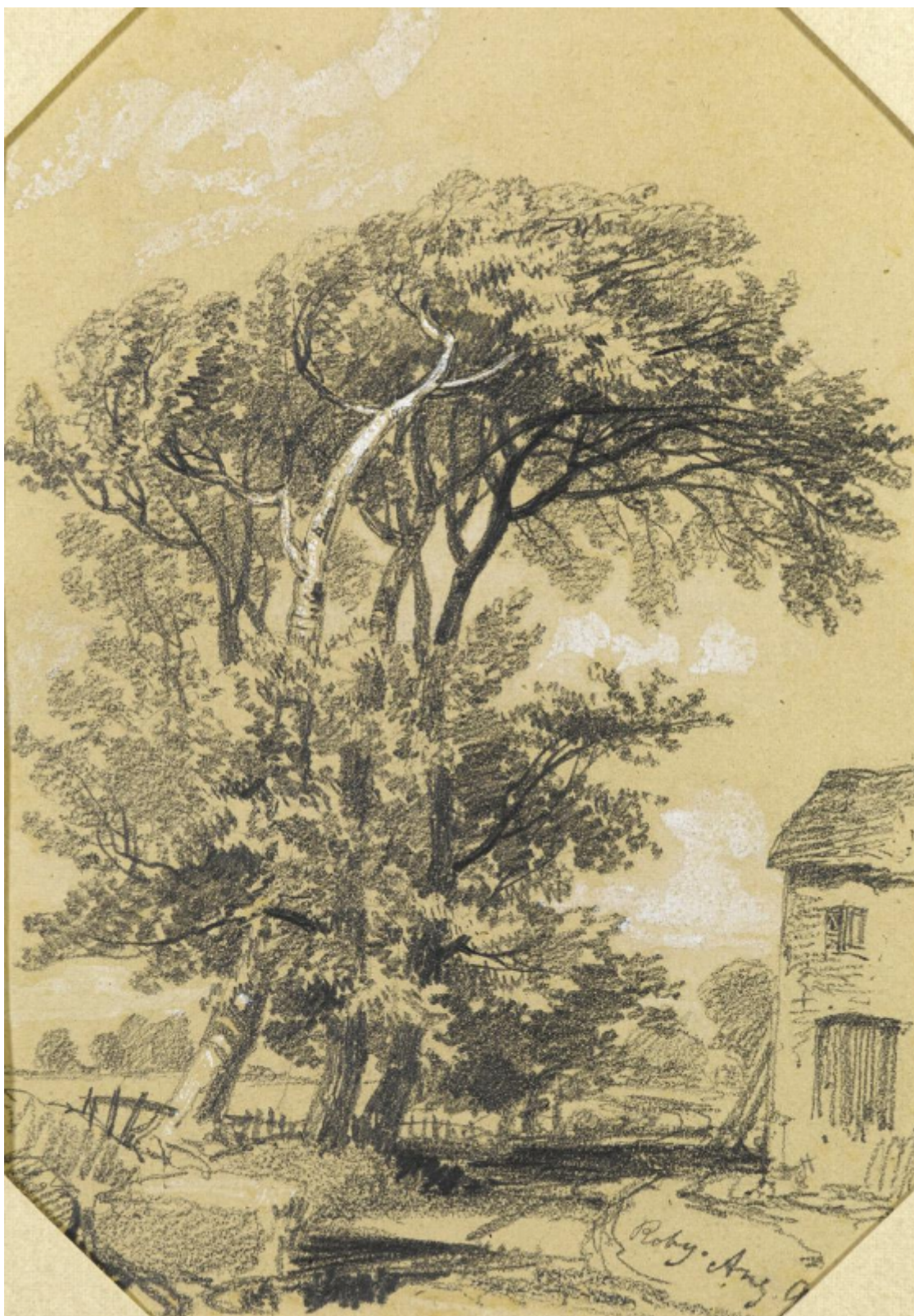


Roby, Lancashire

Edward Lear

Sold



## Description

Edward Lear (1812-1888)  
View at Roby, Lancashire

Inscribed lower right: Roby. Aug 9  
Pencil heightened with touches of white on buff paper, with cut corners  
21.5 by 15 cm., 8 ½ by 5 ¾ in.

The drawing dates from 9th August 1836 just before his departure from Knowsley Hall on his walking tour of the Lake District. Between 1831 and 1837, Lear frequently lived and worked at Knowsley Hall, Lancashire, the home of the 13th Earl of Derby (1775-1851), who commissioned him to make drawings of the birds and animals in the menagerie there. Lear records that he set off from Knowsley to the Lake District on the 10th or 12th August.

Roby is now part of the borough of Knowsley but was a small village in the nineteenth century, five miles east of the centre of Liverpool.