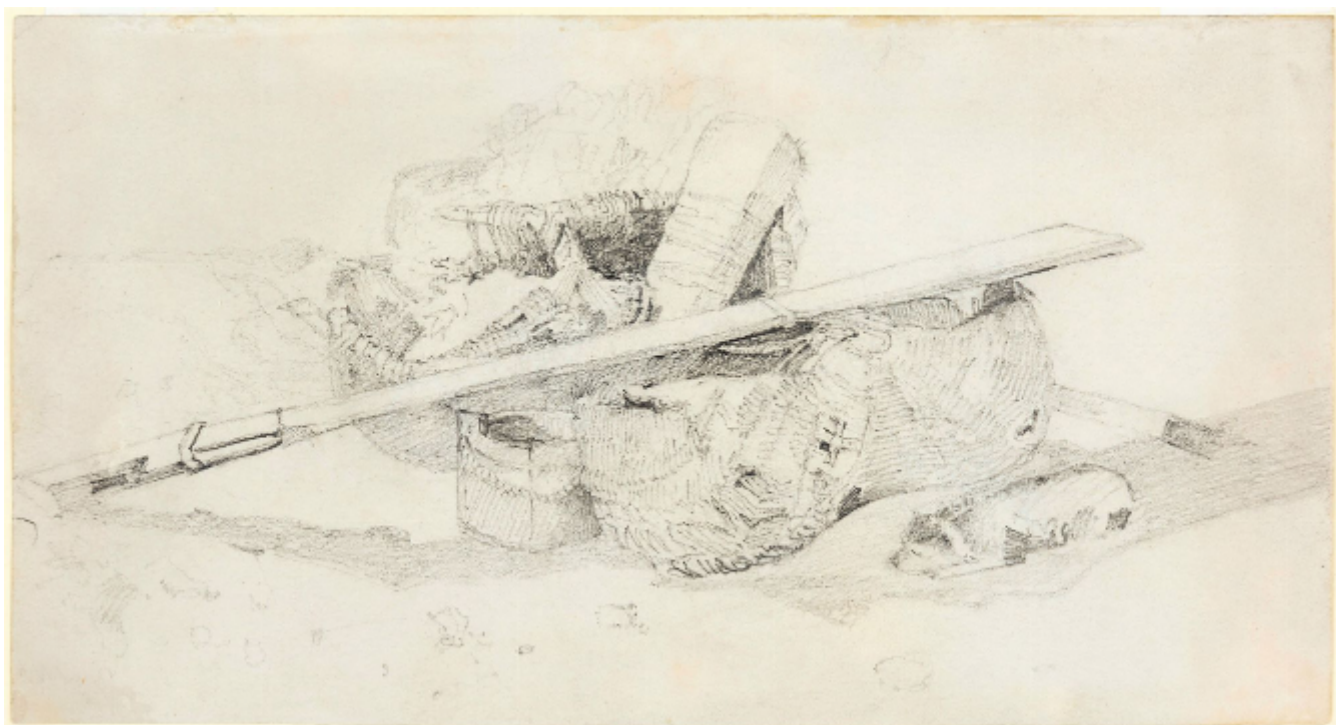


Fish swills, rudder etc.

John Sell Cotman



## Description

John Sell Cotman (1782-1842)  
Fish Swills, Rudder, etc.

Pencil  
13.9 by 26.3 cm., 5 1/2 by 10 1/4 in.

This relates to a watercolour in Norwich Castle Museum of this title dated 1809. It was Cotman's exhibit at the Norwich Society in 1809 (see Miklos Rajnai and Marjorie Allthorpe-Guyton, *John Sell Cotman - Early Drawings (1798-1812)* in Norwich Castle Museum, 1979, no.82, ill. pl.52). Another version of this drawing, with colour notes, is also in Norwich Castle Museum (op. cit. no.81, ill. pl.51). Cotman drew a number of studies of fishing tackle and beached boats at this period which were probably executed at Cromer.